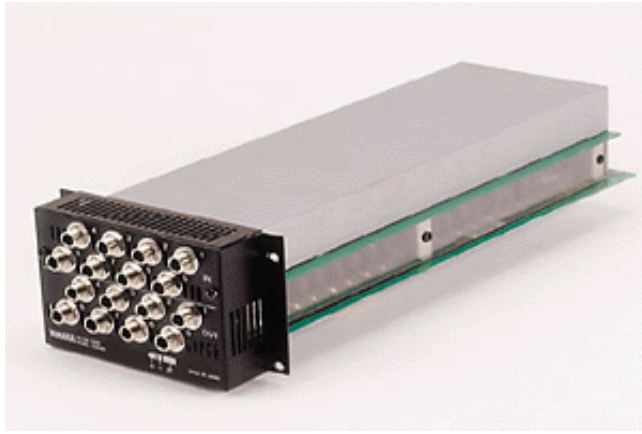


**CD8AD**

**Interface Card for the 02R**
**CD8AD**

CD8AD interface cards are used to connect Yamaha digital products to analog devices such as analog multi-track recorders or synthesizers.

**Connector**

TRS Phone x 16

**Specifications:**

Sampling Frequency:	32 kHz -6% ~ 48 kHz+6%
Total Harmonic Distortion:	less than 0.05% (each channel) @ +4 dB, 1 kHz less than 0.02% (each channel) @ +23 dB, 1 kHz
Dynamic Range: (@ Gain switch +4 dB)	110 dB type DA Converter (each channel) @ Fs=48kHz, Gain switch = +4 dB 105dB type AD Converter (each channel) @ Fs = 48 kHz, Gain switch = +4 dB
Hum and Noise:	less than -88 dB DA Converter (each channel) @ Fs = 48 kHz @ Gain switch = +4 dB
A/D Conversion:	20 bits linear / 64 times oversampling (each channel)
D/A Conversion:	20 bits linear / 8 times oversampling (each channel)

**Analog Input**

Input Terminals	Actual load impedance	For use with nominal	Input level		Connector
			Nominal	Max. before Clip	
8 channels	10 k $\Omega$	600 $\Omega$	+4 dB (1.23 V)	+24 dB (12.3 V)	Phone jacks (TRS)
	10 k $\Omega$	600 $\Omega$	-10 dBV (316 mV)	+10 dBV (3.16 V)	

**Analog Output**

Output Terminals	Actual source impedance	For use with nominal	Output level		Connector
			Nominal	Max. before Clip	
8 channels	150 $\Omega$	10 k $\Omega$	+4 dB (1.23 V)	+24 dB (12.3 V)	Phone jacks (TRS)
	150 $\Omega$	10 k $\Omega$	-10 dBV (316 mV)	+10 dBV (3.16 V)	

Frequency Response:	+1 dB, -3dB, 20Hz ~ 20 kHz (each channel) @ +4 dB into 10 k ohms @Gain switch = +4 dB
Dimensions (W X H X D)	132 mm x 78.3 mm x 349.9 mm
Weight:	1.15 kg